



Contact Us



Office

2417 West Cortland Street
Chicago, Illinois 60647
sales@housethlabels.com
www.housethlabels.com

Telephone

Andrew Lewis
Marc Schreiber
(312) 569-9229

HOUSELABELS.COM

[About Us »](#)

[Services »](#)

[Supermarket Labels »](#)

[Logistics and Shipping Labels »](#)

[DYMO™- / Seiko™- / Zebra™- / Datamax™-compatible Labels »](#)

[8.5" x 11.0" Label Sheets »](#)

[Specialty Labels and Products »](#)

[Terms & Conditions »](#)

About Us

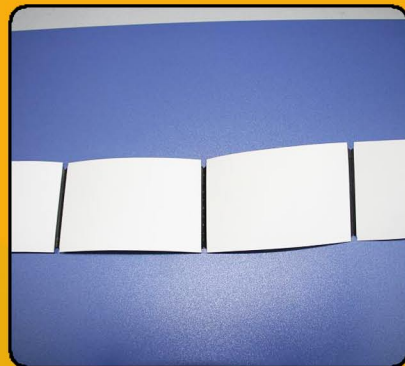
HouseLabels.com specializes in producing label products, such as:

- ◆ Adhesive labels for use with thermal, thermal transfer, laser and inkjet printers;
- ◆ Thermal transfer ribbons (wax, resin, and mixed); and
- ◆ Raw adhesive paper rolls for other label manufacturers.

Our products are intended for use in operations including, but not limited to, supermarkets, logistics, pharmacies, consumer products and clothing.

All of HouseLabels.com production is outsourced to a reliable mainland China manufacturer on whom we have relied, for the last two years, for our online B2C division. Our customer satisfaction is extremely high and our growth exceptional. As a result, we are beginning to receive inquiries from other businesses and associations for our products. We hope that this brochure sufficiently outlines our products and services. Please do not hesitate to call us as we enthusiastically welcome all opportunities – we thrive on customer satisfaction.

Andrew and Marc
co-Founders



Services

HouseLabels.com also offers support services once your order arrives in the United States including, but not limited to:

- ◆ Shipping directly to one location designated by you
- ◆ Shipping to our warehouse for subsequent fulfillment:
 - Reconfiguration and immediate shipment to one or more locations designated by you (in bulk or individually)
 - Reconfiguration, store, and subsequent shipment to location(s) designated by you (in bulk or individually)
- ◆ Creating a web application for online order processing and fulfillment (interfacing with your legacy system for order validation, if required)



Supermarket Labels *(for pricing, scales and shelves)*

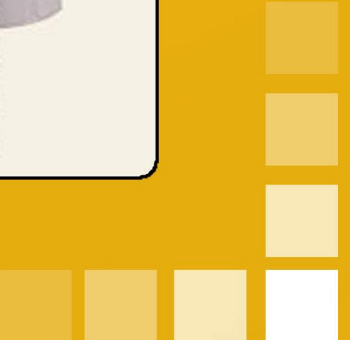
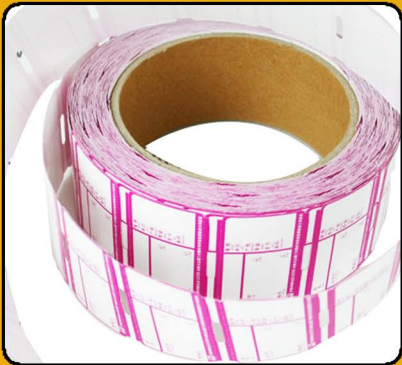
Thermal Scale Labels

Standard sizes: 40mm*60mm*800pcs/roll 38mm*56mm*1000pcs/roll custom sizes also accepted	Specifications: Face stock: direct thermal Glue: water base Liner: glassine Rolling core: papercard	Colors: 1-5 colors Any color Artwork supplied by you
---	--	--



Shelving Tag and Price Labels

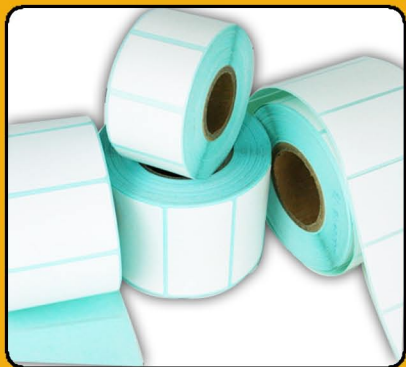
Any size, shape, color or packaging is available
Shelving tags available for both carbon printing
and direct thermal



Logistics and Shipping Labels

Logistics Labels

Logistics is the process of organizing any operation; and, if you are a logistics or distribution company, you'll need plenty of logistics labels to ensure that your processes track and flow efficiently. HouseLabels.com can supply a wide array of logistics labels that are ideal for introducing new efficiencies into your business, as well as for streamlining your shipping and receiving processes. We can manufacture labels that feature color-coded identifiers and barcodes, or labels that are reflective, scannable, repositionable, or magnetic. We can also provide several types of logistics labels that are ready to auto-apply and/or are consecutively numbered. Additionally, many warehousing situations require labeling solutions in which labels maintain their integrity in any situation (heat, cold, humidity) -- and that's one of our specialties.



Shipping Labels

Here are indisputable trends:

- ◆ Packages are going through more "hands" and must comply with an increasing number of often overlapping regulations
- ◆ There are more drop ships
- ◆ More packages are shipped via air
- ◆ The average value of a shipment is increasing
- ◆ There are more international shipments than ever

With these trends, shipping labels are more important than ever. They advertise what is so important inside, distinguishing your package from others. This provides the carrier a reason to handle it with care; accordingly, labels assist in the prevention of damage by instructing and warning.



DYMO™- / Seiko™- / Zebra™- / Datamax™-compatible Labels

HouseLabels.com specializes in producing compatible self-adhesive label products for the most popular brands in the marketplace.

1. We start with superior raw materials:

- 80G/M2 high quality direct thermal paper
- Acrylic, permanent adhesive
- White glassine release paper, 60G/M2
- Superb whiteness
- Water, grease and rub resistant



2. Labels are produced using the latest technology and undergo numerous quality control checks. Our certifications include ISO 9000/9001/9004/19011: 2000 and others.
3. HouseLabels.com meets or exceeds OEM manufacturer specifications. Our labels will not damage your printhead. We use state of the art glue technologies which conform to our stringent standards.
4. Our labels are produced in a clean environment and immediately packed into protective polybags and then, in most cases, into mini-cartons (optional) to protect the rolls from dirt, sunlight and scuffing.

Some of the most popular formats are:

Item #	Type	Size (inches)	Labels/Roll
DYMO™-compatible ¹			
30251	Address	1-1/8 x 3-1/2	130
30252	Address	1-1/8 x 3-1/2	350
30253	Address	1-1/8 x 3-1/2	350 x 2
30321	Large Address	1-4/10 x 3-1/2	260
30330	Return Address	3/4 x 2	500
30323	Small Shipping	2-1/8 x 4	220
30344	Large Shipping	2-5/8 x 4	300
1744907	Large Shipping	4 x 6	220
30332	Multi Purpose	1 x 1	750
30333	Multi Purpose	1/2 x 1	1000 x 2
30334	Multi Purpose	2-1/4 x 1-1/4	1000
30336	Multi Purpose	1 x 2-1/8	500
30272	Continuous Paper Roll	2-7/16 x 300	--
1738595	Barcode	3/4 x 2-1/2	450
30915	Internet Postage	1-5/8 x 1-1/4	700
30383	3-Part Internet Postage	2-1/4 x 7	150
30384	2-Part Internet Postage	2-1/4 x 7-1/4	150
99019	1-Part Internet Postage	2-5/16 x 7-1/2	150
30327	File Folder	9/16 x 3-7/16	130
30277	File Folder	9/16 x 3-7/16	130x2
Inquire	Media		
Inquire	Specialty Retail		
Inquire	Badges		
Inquire	Veterinary		

Item #	Type	Size (inches)	Labels/Roll
Seiko™-compatible ¹			
2RL	Address	1-1/8 x 3-1/2	130
2RLH	Address	1-1/8 x 3-1/2	260
2RLE	Address	1-4/10 x 6-1/2	260
SRL	Shipping	2-1/8 x 4	220
FLW	File Folder	9/16 x 3-7/16	130
DRL	Diskette	2-1/8 x 2-3/4	320
Zebra™-compatible			
800540-604	Large Shipping	4 x 6	250
800540-505	Multi Purpose	4 x 5	305
800540-405	Multi Purpose	4 x 4	377
Datamax™-compatible ²			
See below			

Notes

- Options include custom colors, clear labels, adhesive variations (removable, permanent)
- We offer an extensive line of 4.0"/5.0"/6.0"/8.0" rolls (diameter) with premium paper, polyester, Kimdura film and BOPP film labels. All of these labels are compatible with Datamax™, Intermec™, SATO™ and Zebra™ desktop printer models

8.5" x 11.0" Label Sheets

HouseLabels.com produces Shipping Labels, in sheets, for laser and inkjet printers. Our blank Shipping Labels work with all popular label software programs and label templates and are excellent for your carton shipments, bar coding and other shipping label uses. All shipping labels are available in a wide variety of materials including clear, glossy, foil, colors and more. Any one of our shipping label choices can give your boxes or packages a professional look.



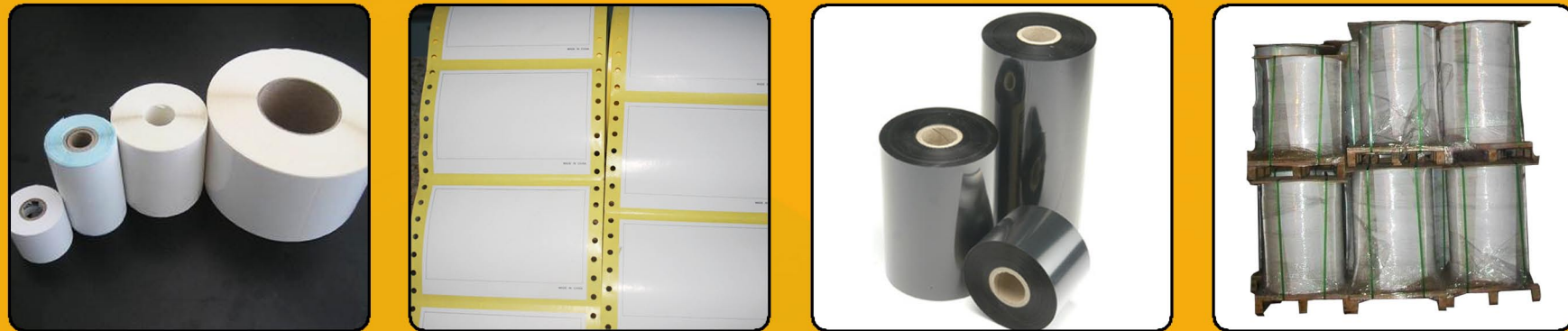
ILS-01: (8.5*11")	ILS-02: (8.5" x 5.5")	ILS-04: (4.25" x 5.5")	LS-06: (4.25" x 3.666")	ILS-08: (4.25" x 2.75")	ILS-10R: (2" x 4")	ILS-12: (2.833"X2.750")	LS-33: (2.833" x 1")
ILS-14: (4.25" x 1.5")	ILS-15: (2.600" x 2")	ILS-30R: (2.625" x 1")	ILS-80R: (1.75" x 0.5")	ILS-20R: (4" x 1")	ILS-40: (2" x 1")	ILS-48R:(1.625"x0.875")	ILS-119R:(0.9375"x0.5")
ILS-06R: (4"x3.333")	ILS-08VR: (2" x 5")	ILS-50:(1.5" x 1")	ILS-04VR:(3.75"x4.75")	ILS-15R:(2.688"x2")	ILS-56:(1.9375"x.75")	ILS-14R:(4"x1.333")	ILS-30RF:(3.438"x0.67")
ILS-12C: (2.5" Circle)	ILS-02CD: (4.6875")	ILS-24C: (1.625" Circle)	ILS-136: (1" x .625")	ILS-8R:(3.875"x2.3125")	ILS-21:(1.25" x 2.25")	ILS-18R:(3.44"x0.94")	ILS-04CD:(4.625")

Specialty Labels and Products

Polyester labels are the toughest labels you will find! If you need a label for harsh environments, industrial type applications, outdoors, or underwater, the Polyester label is what you need. These labels are suitable for offset, laser, digital and copier printing methods but should be tested thoroughly under end use conditions to ensure it meets the requirements of the specific application and printing method.

Printing Ribbons and roll-form labels are required for thermal transfer printing. This technology needs lower heat to transfer a printed image than some printing methods so you have the widest variety of paper and film materials at your disposal. You also have the most extensive choice of adhesives to fit special labeling applications. Because the bond of a well-matched ribbon to a label can be far superior to other ink technologies, you get the best print durability and you can often avoid the need for a protective film laminate.

- Wax** - Recommended for shipping labels, carton labeling and retail bags. Use with high speed printers.
- Wax/Resin** - Increased resin makes labels smudge and smear-proof. Use with synthetic and colored labels.
- Resin** - Waterproof, grease, chemical and solvent resistant. Use with polyester and synthetic labels.
- Colors** - Recommended for color coding inventory in warehouse and retail applications.



Terms & Conditions

PAYMENT TERMS:
Terms are based upon completion of a credit application and approval by HouseLabels.com. Visa, MasterCard, American Express, and Discover cards are accepted.

FREIGHT:
All prices are F.O.B China. Freight charges include a small handling fee.

DELIVERY CLAIMS:
Title to goods is passed to purchaser upon transfer of the Bill of Lading to the carrier. All discrepancies must be noted by you on the Bill of Lading at the time of delivery. HouseLabels.com will not make adjustments without delivery receipt verification.

ARTWORK:
HouseLabels.com provides its customers with our in-house Graphic Requirements so that customers can prepare the artwork to minimize both prepress lead times as well as potential incompatibilities. When e-mailing artwork, please also include a pdf or jpg.

PROOF ACCEPTANCE:
HouseLabels.com requires your signature for every proof provided. This is the customer's acknowledgement and acceptance that the label is accurate in layout and copy and is ready for production.

PLATE CHARGES:
A one-time plate charge applies for first time orders and when changes are requested by you on existing labels.

CUSTOM PRINTING:
HouseLabels.com recommends print areas of labels to be ink free. You are fully responsible for all printhead damage caused by the any request for ink coverage in the machine print areas.

OVER/UNDER RUNS:
HouseLabels.com reserves the right to ship and bill custom label runs within a 10% over or under the specified length of run requested.

WARRANTY TO OUR CUSTOMERS:
HouseLabels.com offers technical data, provides samples, and makes recommendations based upon tests and research, which are believed to be reliable, but do not constitute a warranty or guarantee. Whenever product is sold or a sample provided, it is with the understanding that you and/or the end-user has determined the product to be suitable for applications under its own operating conditions. HouseLabels.com warrants our products to be free of material and/or workmanship defects. Should any product be determined as defective to our satisfaction within six months after the date of shipment, we will replace the product or issue a credit based upon the cost of the defective product. HouseLabels.com's liability shall be limited to replacement of the defective product or a credit based upon the cost of the defective product. In no event will HouseLabels.com be liable for your loss of profits or any other consequential damages. Further, all products sold are without any warranty as to merchantability or fitness for a particular purpose, or any other warranty expressed or implied. No representative or agent of HouseLabels.com is authorized to give any warranty, guarantee, or make any representation in addition to or contrary to the foregoing provisions.